

Рихтер, Эмиль

Emil Richter (14-01-1894 - 16-03-1971)

Страны:  [Чехословакия](#)

Дата рождения: [1894 год](#)

Дата смерти: [1971 год](#)

Звание: [Международный мастер \(1951\)](#)


Эмиль Рихтер ([1894–1971](#)) –

[чехословацкий шахматист](#), [международный мастер \(1951\)](#).

Международные турниры: [Карлсбад – Марианске-Лазне \(1948\)](#) – 16-е место. Czech composer

UNOFFICIAL CHESS OLYMPIADS

OVERALL STATISTICS									
ap	years	pts	gms	+	=	-	%	medals won	
								team	individual
1	1936	11	17	9	4	4	64.7	0 - 0 - 0	0 - 0 - 0

STATISTICS YEAR BY YEAR															
year	ttl	bd	flag	code	Elo	pts	gms	+	=	-	%	Elo _{av}	Elo _p	positions	
														tea	ind
1936		7		CSR		11	17	9	4	4	64.7			5.	

WORKERS' CHESS OLYMPIADS

OVERALL STATISTICS									
ap	years	pts	gms	+	=	-	%	medals won	

										team	individual			
1	1948			1½	4	1	1	2	37.5	0 - 0 - 0	0 - 0 - 0			
STATISTICS YEAR BY YEAR														
year	ttl	bd	code	ELO	pts	gms	+	=	-	%	ELO _{av}	ELO _p	positions	
													tea	ind
1948		3	CSR		1½	4	1	1	2	37.5			4.	

Number of games in database: 41

Years covered: 1928 to 1949

Overall record: +20 -13 =8 (58.5%)*

* Overall winning percentage = (wins+draws/2) / total games

Based on games in the database; may be incomplete.



Most played openings

[D37](#) Queen's Gambit Declined (3 games)

[B17](#) Caro-Kann, Steinitz Variation (3 games)

[D75](#) Neo-Grunfeld, 6.cd Nxd5, 7.O-O c5, 8.dxc5 (2 games)

[D45](#) Queen's Gambit Declined Semi-Slav (2 games)

[A13](#) English (2 games)

[A15](#) English (2 games)

[D50](#) Queen's Gambit Declined (2 games)

[D95](#) Grunfeld (2 games)

[Search Sacrifice Explorer](#) for Emil Richter

[Search Google](#) for Emil Richter

Ratings

Year	Rank	Edo	Dev.	Games
1912	125	2295	(78)	14

[Rating table notes](#)

Biographical data

Name: **Richter, Emil**

Also known as: E. Ruszyński; Sudi

Born: 14 Jan. 1894

Died: 16 Mar. 1971

References

[Books](#)

Di Felice, Chess Results, 1901-1920, page 179

Gaige, Chess Personalia, page 353

Thulin, Name index to CTC, page 219

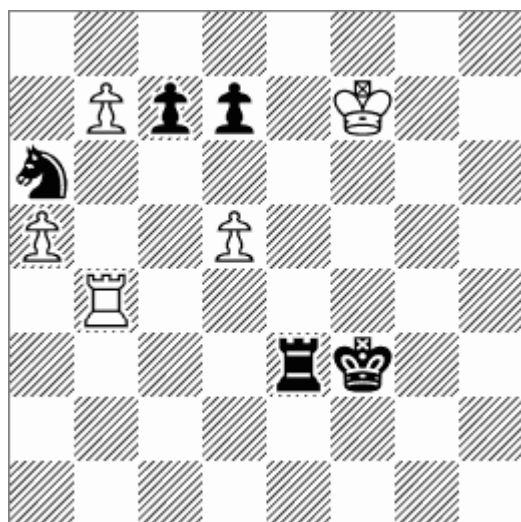
Tournament data

[Prague 1912 \(2\)](#) Dubruský Club Tournament 9.5 / 14

Richter, Emil

Morgenzeitung, 1928

Honorable Mention



+ 5+5

Best World Rank: **#29** (3 different months between the [April 1943 rating list](#) and the [February 1944 rating list](#))

Highest Rating: **2598** on the [December 1943 rating list](#), #33 in world, [age 49y11m](#)

Best Individual Performance: **2612** in [Prague, 1945](#), scoring 7/10 (70%) vs 2506-rated opposition

Prague-ch, 1926	not rated on January 1926 list	-	= (1.5/3, 50%)	no games vs rated opposition	N/A
Kautsky mem5 Prague, 1928	not rated on January 1928 list	[2538]	+5 (6/7, 86%)	+4 (4/4, 100%) vs 2356-rated opposition	N/A
Kautsky mem 6th Prague, 1929	not rated on January 1929 list	[2532]	+2 (2/2, 100%)	+2 (2/2, 100%) vs 2442-rated opposition	N/A
Kautsky mem7 Prague, 1930	2518 (#58 on January 1930 list)	[2444]	-1 (1/3, 33%)	= (1/2, 50%) vs 2452-rated opposition	-0.2
Kautsky mem 8th Prague, 1931	not rated on January 1931 list	[2518]	+2 (3/4, 75%)	+1 (2/3, 67%) vs 2489-rated opposition	N/A
<hr/>					
Kautsky mem Prague, 1932	2518 (#61 on January 1932 list)	-	+1 (1/1, 100%)	no games vs rated opposition	N/A
Kautsky mem10 Prague, 1933	not rated on January 1933 list	-	= (1/2, 50%)	no games vs rated opposition	N/A
Prague army, 1933	not rated on January 1933 list	-	= (1/2, 50%)	no games vs rated opposition	N/A
Munich ol (Men), 1936	not rated on August 1936 list	-	= (1/2, 50%)	no games vs rated opposition	N/A
Chocen, 1942	not rated on January 1942 list	[2605]	+5 (8/11, 73%)	+3 (3/3, 100%) vs 2492-rated opposition	N/A
<hr/>					
Prague, 1945	not rated on January 1945 list	2612	+4 (7/10, 70%)	+4 (7/10, 70%) vs 2506-rated opposition	N/A
CSR-ch Bratislava, 1948	not rated on January 1948 list	[2406]	+3 (5.5/8, 69%)	-2 (0.5/3, 17%) vs 2511-rated opposition	N/A
Karlovy Vary, 1948	not rated on January 1948 list	2537	-3 (8/19, 42%)	-1 (5.5/12, 46%) vs 2557-rated opposition	N/A
CSR-NED Prague, 1949	2454 (#167 on January 1949 list)	[2534]	+1 (1.5/2, 75%)	+1 (1.5/2, 75%) vs 2515-rated opposition	+0.6
CZE-AUT Prague, 1949	2454 (#167 on January 1949 list)	[2420]	= (0.5/1, 50%)	= (0.5/1, 50%) vs 2423-rated opposition	=0.0
<hr/>					
POL-CSR Katowice, 1949	2454 (#167 on January 1949 list)	-	+2 (2/2, 100%)	no games vs rated opposition	N/A
Trencianske-Teplice, 1949	2454 (#167 on January 1949 list)	2608	+2 (10.5/19, 55%)	+2 (8/14, 57%) vs 2561-rated opposition	+2.8
CSR-BUL Prague, 1950	2542 (#95 on January 1950 list)	[2496]	+1 (2.5/4, 63%)	+1 (2.5/4, 63%) vs 2457-rated opposition	+0.1