



Джонатан Местел

Jonathan Mestel



Страны: [+ Англия](#)

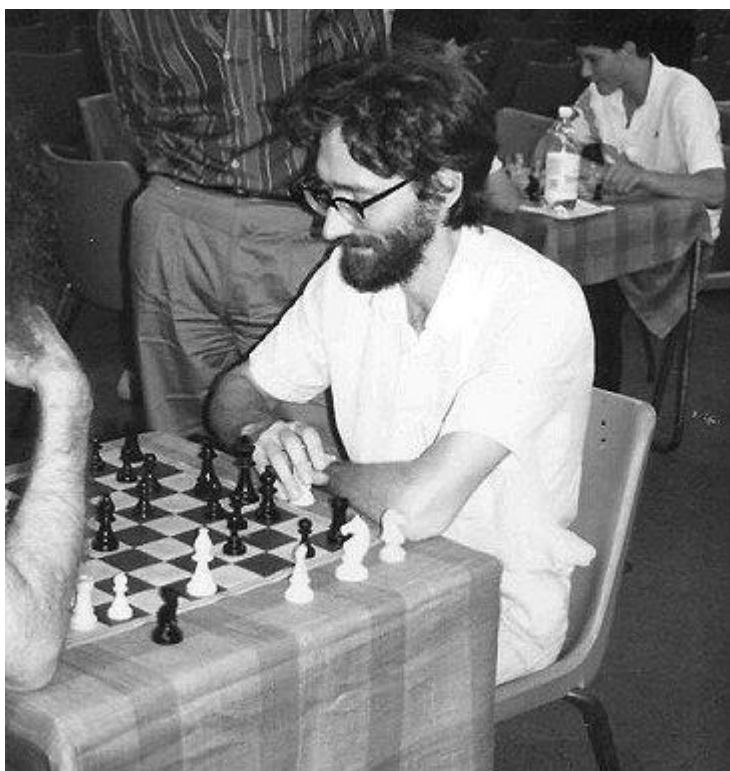
Дата рождения: [13 марта 1957](#) (58 лет)

Место рождения: [Кембридж](#)

Звание:	Гроссмейстер (1982) Международный мастер(1977)
Актуальный рейтинг:	2471 (май 2015)
Личная карточка на сайте ФИДЕ	
Личная карточка на сайте Chess DB	

Эндрю Джонатан Местел ([англ. Andrew Jonathan Mestel](#), [13 марта 1957, Кембридж](#)) – [английский шахматист](#), [гроссмейстер \(1982\)](#). Сын астронома [Леона Местела](#).

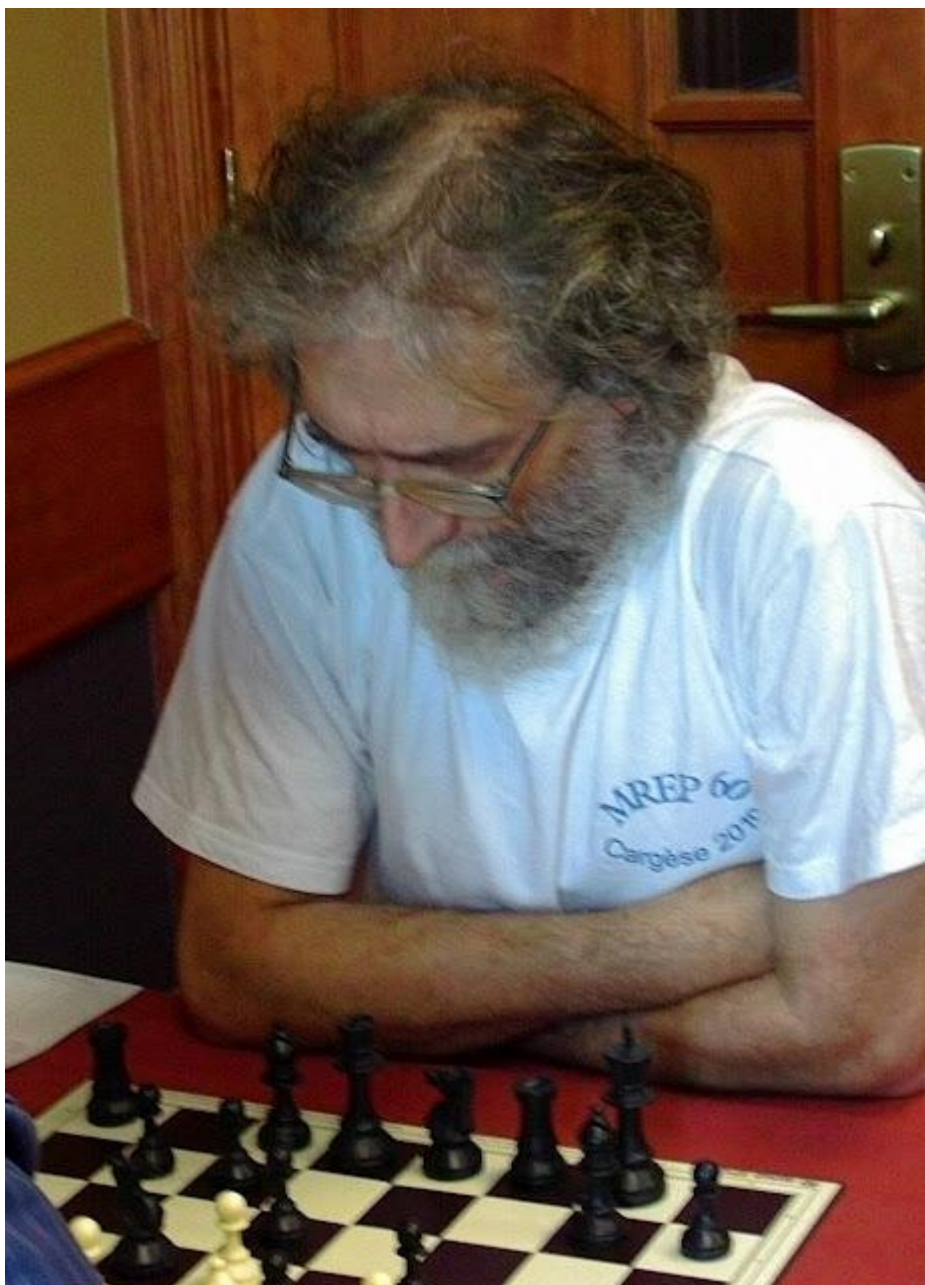
Первых успехов добился в юношеских соревнованиях: в [1974](#) выиграл [Кубок мира для младших юниоров](#); в чемпионате мира среди юношей ([1975](#)) – 3–4-е места. В 19 лет ([1956](#)) стал чемпионом Англии, в [1983](#) завоевал звание чемпиона вторично, а в [1986](#) разделил в чемпионате 1–3-е места.



С [1976](#) выступает в составе команды Англии в международных командных соревнованиях; лучший результат: 1-е место на 1-й запасной доске на Олимпиаде [1984](#). С 1982 участвует в соревнованиях на первенство мира: зональные турниры ФИДЕ – [Марбелья](#) (1982) – 1–4-е, [Брайтон](#) (1984) и [Бат](#) ([1987](#)) – 3-е; межзональный турнир, [Лас-Пальмас](#) (1982) – 8–10-е места.

Лучшие результаты в других международных соревнованиях: [Бирмингем](#)(1976) – 1-е; [Лондон](#) (1976) – 1–5-е, [1977](#) – 2–4-е, [1985](#) – 2–5-е; [Берн](#) (1977) – 2–6-е; [Тилбург](#) (1978) – 3–5-е; [Эсбьерг](#) (1979) – 1–2-е, [1980](#) – 2-е, 1984 – 2–3-е; [Гастингс](#) (1981/1982) – 4–5-е, (1983/1984) – 3-е места.

Внёс вклад в развитие дебютной теории, обогатив новыми идеями вариант дракона в [сицилианской защите](#).



Эндрю Джонатан Местел фигура в современных шахматах редкая. Он один из тех немногих шахматистов высокого класса, который не будучи профессионалом (в полном смысле этого слова) на протяжении ряда лет показывал отличные результаты. Его восхождение пришлось на конец семидесятых годов, когда Англия переживала настоящий шахматный бум. Именно в это время на британских островах появилась новая плеяда молодых перспективных шахматистов - Нанн, Спилмен, **Местел**.



Любопытно, что все трое получили блестящее образование в лучших высших заведениях страны и имеют немалые академические заслуги. Словом, пришло поколение шахматных интеллектуалов, не замыкавшихся лишь на игре на 64 клетках.



Именно они составили костяк той знаменитой сборной Англии, которая была основным конкурентом великой сборной СССР в восьмидесятые годы. Кстати, за команду **Местел** всегда играл здорово. У многих в памяти прекрасная игра **Джонатана** на олимпиаде 1984 года. Шахматным профессионалом он так и не стал. На протяжении вот уже многих лет **Джонатан** преподает в университете. Пожалуй для **Местела**, больше чем для кого-либо другого шахматы являются чем-то вроде джентльменской забавы, интеллектуальной задачи. Жестокий профессионализм, игра с жестким прицелом на результат ему в принципе чужды. Не случайно, **Джонатан** является одним из лучших в мире решателей (в 1986 году он стал международным мастером). Это больше соответствует его жизненной философии. Никакие посторонние факторы (личность противника, спортивная ситуация) не замутняют чистоты проблемы. Мы все реже и реже видим **Джонатана** за шахматной доской, да и результаты уже не те. Новое "голодное" поколение шахматных прагматиков безжалостно вытесняет динозавров-интеллектуалов вроде **Местела**. Такова спортивная жизнь. И все же немного жаль. Без таких людей как **Джонатан** шахматным мир слегка поблекнет.

MEN'S CHESS OLYMPIADS

OVERALL STATISTICS															
ap	years					pts	gms	+	=	-	%	medals won			
	team		individual												
6	1976-1984, 1988					27½	47	20	15	12	58.5	0 - 2 - 1		1 - 0 - 0	
STATISTICS YEAR BY YEAR															
year	ttl	bd	flag	code	Elo	pts	gms	+	=	-	%	Elo _{av}	Elo _p	positions	
														tea	ind
1988	GM	res.	+	ENG	2510	1½	4	1	1	2	37.5	2368	2281	2.	
1986	Did not take part.														
1984	GM	res.	+	ENG	2545	7	9	6	2	1	77.8	2406	2626	2.	1.
1982	IM	res.	+	ENG	2540	7	11	5	4	2	63.6	2453	2555	10.	12.
1980	IM	² res.	+	ENG	2485	5½	8	4	3	1	68.8	2360	2501	6.	8.
1978	IM	res.	+	ENG	2450	3½	9	2	3	4	38.9	2386	2306	12.	32.
1976		res.	+	ENG	2390	3	6	2	2	2	50.0	2328	2328	3.	

Number of games in database: **382**

Years covered: **1971 to 2012**

Last FIDE rating: **2471**

Highest rating achieved in database: **2540**

Overall record: **+116 -125 =134 (48.8%)***

* Overall winning percentage = (wins+draws/2) / total games

Based on games in the database; may be incomplete.

7 exhibition games, odds games, etc. are excluded from this statistic.

MOST PLAYED OPENINGS

With the White pieces:

With the Black pieces:

[Sicilian](#) (72)

[B92](#) [B56](#) [B90](#) [B83](#) [B84](#)

[Sicilian Najdorf](#) (21)

[B92](#) [B90](#) [B93](#) [B91](#)

[French Defense](#) (17)

[C00](#) [C18](#) [C09](#) [C02](#) [C03](#)

[Ruy Lopez](#) (14)

[C85](#) [C92](#) [C77](#) [C80](#) [C90](#)

[Sicilian Scheveningen](#) (13)

[B83](#) [B84](#) [B82](#)

[English](#) (10)

[A13](#) [A16](#) [A15](#) [A10](#)

[Sicilian](#) (48)

[B70](#) [B76](#) [B51](#) [B78](#) [B75](#)

[King's Indian](#) (44)

[E94](#) [E70](#) [E63](#) [E73](#) [E90](#)

[Sicilian Dragon](#) (30)

[B70](#) [B76](#) [B78](#) [B75](#) [B77](#)

[English](#) (13)

[A15](#) [A10](#) [A17](#) [A13](#)

[Queen's Pawn Game](#) (12)

[A41](#) [A40](#) [A50](#) [D05](#) [D02](#)

[Modern Benoni](#) (11)

[A56](#) [A64](#) [A57](#) [A62](#)

REPERTOIRE EXPLORER



With the
White Pieces



With the
Black Pieces



NOTABLE GAMES:

[A J Mestel vs N Renman, 1980](#) 1-0

[H Ree vs A J Mestel, 1983](#) 0-1

[Nunn vs A J Mestel, 1978](#) 0-1

[Alburt vs A J Mestel, 1984](#) 0-1
[T Taylor vs A J Mestel, 1978](#) 0-1
[Browne vs A J Mestel, 1982](#) 0-1
[A J Mestel vs Pinter, 1982](#) 1-0
[Van der Wiel vs A J Mestel, 1982](#) 0-1

NOTABLE TOURNAMENTS:

[Hastings 1977/78](#) (1977)
[Las Palmas Interzonal](#) (1982)
[Hastings \(1980/81\)](#) (1980)
[Phillips & Drew Kings](#) (1982)
[Lone Pine](#) (1978)

GAME COLLECTIONS:

[Hastings \(1981/82\)](#) by Chessical
[Hastings 1977/78](#) by suenteus po 147
[Cshatranj's favorite games](#) by Cshatranj
[Esbjerg 1978 - Vesterhavsturneringen](#) by Troller

[Search Sacrifice Explorer](#) for Andrew Jonathan Mestel
[Search Google](#) for Andrew Jonathan Mestel
[FIDE player card](#) for Andrew Jonathan Mestel

Andrew Jonathan Mestel (13-03-1957) British GM, solving GM and composer



Jonathan Mestel is better known as an excellent otb player. He is also a solving Grandmaster and was World Solving Champion in 1997 - see [Wikipedia](#) for the long list of his achievements.

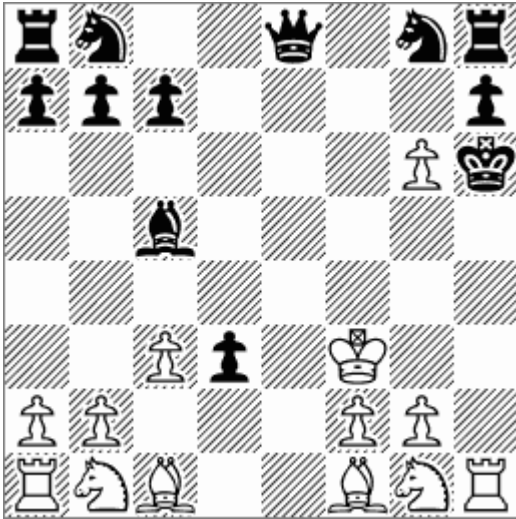
He sometimes composes chess problems of all genres and seems inspired

each year by the atmosphere of the World Chess Composition Congress.

Mestel, Andrew Jonathan

Champagne Tournay, Rhodes, 2007

2nd Prize



SPG 11.5 13 + 12

Proof Game in 11.5 moves (after the 12th white move)



Best World Rank: **#46** (on the [December 1984 rating list](#))

Highest Rating: **2659** on the [September 1984 rating list](#), #47 in world, [age 27y6m](#)

Best Individual Performance: **2721** in [EU-chT \(Men\) Plovdiv, 1983](#), scoring 6/7 (86%) vs 2588-rated opposition

BCF-ch U14 Rhyl, 1969	not rated on January 1969 list	-	+1 (1/1, 100%)	no games vs rated opposition	N/A
BCF-ch Brighton, 1972	not rated on August 1972 list	2486	+2 (6.5/11, 59%)	= (3.5/7, 50%) vs 2483-rated opposition	N/A
ENG-FRG m Attendorn, 1972	2479 (#312 on November 1972 list)	[2534]	+1 (1.5/2, 75%)	+1 (1.5/2, 75%) vs 2516-rated opposition	+0.6
Hastings, 1972	2517 (#213 on December 1972 list)	2436	-8 (3.5/15, 23%)	-8 (3.5/15, 23%) vs 2587-rated opposition	-2.8
Islington op, 1972	2517 (#213 on December 1972 list)	[2512]	= (2.5/5, 50%)	+2 (2.5/3, 83%) vs 2420-rated opposition	+0.7
Canterbury, 1973	2452 (#392 on January 1973 list)	2525	+1 (3.5/6, 58%)	+1 (3.5/6, 58%) vs 2495-rated opposition	+0.8
London op, 1973	2452 (#392 on January 1973 list)	-	+1 (2/3, 67%)	no games vs rated opposition	N/A
BCF-ch Eastbourne, 1973	2452 (#417 on August 1973 list)	2490	+2 (6.5/11, 59%)	= (4/8, 50%) vs 2483-rated opposition	+0.3
EU-ch U20 fin-A Groningen, 1973	2462 (#362 on December 1973 list)	[2455]	= (4.5/9, 50%)	= (1/2, 50%) vs 2468-rated opposition	=0.0
EU-ch U20 qual Groningen, 1973	2462 (#362 on December 1973 list)	[2512]	+2 (4.5/7, 64%)	+1 (1.5/2, 75%) vs 2482-rated opposition	+0.5
WchT U26 Teeside, 1974	2452 (#375 on January 1974 list)	[2459]	-2 (0.5/3, 17%)	-1 (0.5/2, 25%) vs 2544-rated opposition	-0.3
BCF-ch Clacton on Sea, 1974	2454 (#394 on August 1974 list)	2539	+4 (10.5/17, 62%)	+2 (8/14, 57%) vs 2481-rated opposition	+1.4
Hastings, 1974	2468 (#341 on December 1974 list)	2438	-8 (3.5/15, 23%)	-8 (3/14, 21%) vs 2599-rated opposition	-1.8
London BBC TV qf, 1975	2451 (#381 on January 1975 list)	[2387]	-1 (0/1, 0%)	-1 (0/1, 0%) vs 2455-rated opposition	-0.5
Zettlers Birmingham, 1975	2456 (#369 on March 1975 list)	2599	+5 (10/15, 67%)	+4 (9/14, 64%) vs 2504-rated opposition	+2.8
Wch U20 Tjentiste, 1975	2492 (#291 on August 1975 list)	[2551]	+3 (6/9, 67%)	+2 (3/4, 75%) vs 2480-rated opposition	+0.9
ENG-URS m London, 1976	2505 (#245 on January 1976 list)	2479	-5 (0.5/6, 8%)	-5 (0.5/6, 8%) vs 2689-rated opposition	-1.2
BCF-ch Portsmouth, 1976	2508 (#253 on August 1976 list)	2571	+8 (9.5/11, 86%)	+2 (3.5/5, 70%) vs 2510-rated opposition	+1.0
Haifa ol (Men), 1976	2528 (#200 on November 1976 list)	[2458]	= (3/6, 50%)	= (1.5/3, 50%) vs 2464-rated opposition	-0.2
W/EU-ch U20 7677 Groningen, 1976	2521 (#222 on December 1976 list)	-	-1 (0/1, 0%)	no games vs rated opposition	N/A
Telechess ol1 7778 telex, 1977	2516 (#243 on January 1977 list)	[2432]	-1 (0.5/2, 25%)	-1 (0/1, 0%) vs 2528-rated opposition	-0.5
EU-chT (Men) Moscow, 1977	2511 (#263 on April 1977 list)	2497	-2 (2/6, 33%)	-2 (2/6, 33%) vs 2586-rated opposition	-0.5
London, 1977	2503 (#273 on September 1977 list)	2562	+3 (6/9, 67%)	+1 (4/7, 57%) vs 2540-rated opposition	+0.8
Hastings, 1977	2519 (#235 on December 1977 list)	2632	+3 (8.5/14, 61%)	+3 (8.5/14, 61%) vs 2566-rated opposition	+2.3
WchT U26 MEX, 1978	2563 (#145 on January 1978 list)	[2564]	-1 (0.5/2, 25%)	= (0.5/1, 50%) vs 2654-rated opposition	+0.1
London Aaronson, 1978	2562 (#148 on March 1978 list)	[2406]	+2 (6/10, 60%)	-1 (1/3, 33%) vs 2450-rated opposition	-0.9
Lone Pine (Open), 1978	2553 (#165 on April 1978 list)	2588	+1 (5/9, 56%)	= (4/8, 50%) vs 2606-rated opposition	+0.5
Esbjerg, 1978	2561 (#155 on July 1978 list)	2561	+2 (7.5/13, 58%)	+2 (7.5/13, 58%) vs 2507-rated opposition	+0.2
BCF-ch Ayr, 1978	2563 (#146 on August 1978 list)	2556	+5 (8/11, 73%)	+3 (4.5/6, 75%) vs 2450-rated opposition	+0.7
Buenos Aires ol (Men), 1978	2558 (#166 on October 1978 list)	2400	-2 (3.5/9, 39%)	-4 (1.5/7, 21%) vs 2527-rated opposition	-2.3
Hastings, 1978	2538 (#211 on December 1978 list)	2617	+2 (8/14, 57%)	+2 (8/14, 57%) vs 2573-rated opposition	+1.6

ENG-DEN Ribe, 1979	2554 (#162 on January 1979 list)	[2497]	= (1/2, 50%)	= (1/2, 50%) vs 2532-rated opposition	-0.1
EU-chT qual Elvetham Hall, 1979	2555 (#165 on February 1979 list)	-	= (1/2, 50%)	no games vs rated opposition	N/A
BCF-ch Chester, 1979	2547 (#193 on August 1979 list)	[2471]	+1 (6/11, 55%)	-1 (1/3, 33%) vs 2543-rated opposition	-0.5
Hastings, 1979	2530 (#229 on December 1979 list)	2468	-5 (5/15, 33%)	-6 (4/14, 29%) vs 2587-rated opposition	-2.1
Politiken Cup Copenhagen, 1980	2517 (#276 on January 1980 list)	2482	+2 (6/10, 60%)	= (4/8, 50%) vs 2473-rated opposition	-0.4
EU-chT (Men) Skara, 1980	2517 (#276 on January 1980 list)	2578	+1 (3.5/6, 58%)	+1 (3.5/6, 58%) vs 2563-rated opposition	+0.8
Esbjerg, 1980	2529 (#242 on July 1980 list)	2616	+4 (8/12, 67%)	+4 (8/12, 67%) vs 2518-rated opposition	+1.8
WchT U26 Mexico, 1980	2550 (#179 on August 1980 list)	[2566]	+2 (3/4, 75%)	+2 (3/4, 75%) vs 2500-rated opposition	+0.8
Malta ol (Men) La Valetta, 1980	2548 (#179 on November 1980 list)	2550	+3 (5.5/8, 69%)	+1 (3/5, 60%) vs 2529-rated opposition	+0.4
Hastings 8081, 1980	2552 (#176 on December 1980 list)	2537	-2 (6.5/15, 43%)	-3 (5.5/14, 39%) vs 2597-rated opposition	-0.8
Telechess ol2 8182 telex, 1981	2550 (#170 on January 1981 list)	[2541]	= (0.5/1, 50%)	= (0.5/1, 50%) vs 2617-rated opposition	+0.1
Esbjerg, 1981	2554 (#179 on July 1981 list)	2584	+3 (7/11, 64%)	+2 (6/10, 60%) vs 2532-rated opposition	+0.7
WchT U26 Graz, 1981	2564 (#156 on August 1981 list)	2579	+6 (8/10, 80%)	+3 (5/7, 71%) vs 2484-rated opposition	+0.8
Hastings, 1981	2569 (#157 on December 1981 list)	2643	+2 (7.5/13, 58%)	+2 (7.5/13, 58%) vs 2603-rated opposition	+1.5
Marbella zt-B, 1982	2590 (#121 on February 1982 list)	2588	+6 (8/10, 80%)	+2 (4/6, 67%) vs 2534-rated opposition	+0.6
Marbella zt-f, 1982	2590 (#121 on February 1982 list)	2643	+2 (7.5/13, 58%)	+2 (7.5/13, 58%) vs 2603-rated opposition	+1.2
London (Phillips & Drew), 1982	2611 (#88 on April 1982 list)	2611	-3 (5/13, 38%)	-3 (5/13, 38%) vs 2691-rated opposition	-0.3
Las Palmas (Interzonal), 1982	2610 (#87 on July 1982 list)	2626	-1 (6/13, 46%)	-1 (6/13, 46%) vs 2658-rated opposition	+0.2
London (Lloyds Bank Open), 1982	2621 (#70 on August 1982 list)	[2493]	+2 (4.5/7, 64%)	-1 (1/3, 33%) vs 2575-rated opposition	-0.7
Rakovica Belgrade, 1982	2615 (#78 on September 1982 list)	2521	-2 (5.5/13, 42%)	-2 (4.5/11, 41%) vs 2571-rated opposition	-1.6
Luzern ol (Men), 1982	2603 (#96 on October 1982 list)	2568	+3 (7/11, 64%)	= (4/8, 50%) vs 2582-rated opposition	-0.2
Hastings, 1982	2598 (#107 on December 1982 list)	2623	+1 (7/13, 54%)	+1 (7/13, 54%) vs 2604-rated opposition	+0.6
EU-chT (Men) Plovdiv, 1983	2602 (#96 on June 1983 list)	2721	+5 (6/7, 86%)	+5 (6/7, 86%) vs 2588-rated opposition	+2.4
BCF-ch Southport, 1983	2626 (#66 on August 1983 list)	2627	+6 (8.5/11, 77%)	+5 (7.5/10, 75%) vs 2493-rated opposition	+0.9
Hastings 8384, 1983	2635 (#58 on December 1983 list)	2665	+3 (8/13, 62%)	+3 (8/13, 62%) vs 2604-rated opposition	+1.0
Beersheba, 1984	2653 (#49 on February 1984 list)	2562	+2 (7.5/13, 58%)	= (5.5/11, 50%) vs 2563-rated opposition	-1.2
London, 1984	2648 (#51 on April 1984 list)	2621	-3 (5/13, 38%)	-3 (5/13, 38%) vs 2702-rated opposition	-0.7
Esbjerg, 1984	2650 (#53 on July 1984 list)	2656	+3 (7/11, 64%)	+3 (7/11, 64%) vs 2591-rated opposition	+0.7
Brighton (BCF Championship), 1984	2654 (#48 on August 1984 list)	2426	= (3/6, 50%)	-1 (2/5, 40%) vs 2458-rated opposition	-1.7
Thessaloniki ol (Men), 1984	2653 (#47 on November 1984 list)	2602	+5 (7/9, 78%)	+2 (4/6, 67%) vs 2552-rated opposition	+0.3
Brighton zt, 1984	2656 (#46 on December 1984 list)	2552	+2 (5.5/9, 61%)	= (3.5/7, 50%) vs 2566-rated opposition	-0.7

London (Lloyds Bank Open), 1985	2647 (#55 on August 1985 list)	[2486]	+5 (7/9, 78%)	= (2/4, 50%) vs 2497-rated opposition	-0.7
WchT 1st Luzern, 1985	2653 (#51 on November 1985 list)	2523	+1 (4.5/8, 56%)	-1 (2/5, 40%) vs 2588-rated opposition	-0.9
London, 1986	2640 (#73 on March 1986 list)	2547	-5 (4/13, 31%)	-5 (4/13, 31%) vs 2665-rated opposition	-2.1
BCF-ch Southampton, 1986	2609 (#126 on July 1986 list)	2574	+1 (8/15, 53%)	= (7/14, 50%) vs 2569-rated opposition	-0.7
Hastings 8687, 1986	2613 (#118 on December 1986 list)	2637	+2 (7.5/13, 58%)	+1 (6.5/12, 54%) vs 2623-rated opposition	+0.6
Bath (Zonal), 1987	2594 (#160 on February 1987 list)	2598	+4 (7/10, 70%)	+2 (5/8, 63%) vs 2548-rated opposition	+0.6
Swansea (BCF Championship), 1987	2599 (#145 on August 1987 list)	2579	+3 (7/11, 64%)	+2 (6/10, 60%) vs 2526-rated opposition	+0.1
Beersheba, 1988	2608 (#136 on February 1988 list)	2547	+2 (8/14, 57%)	-1 (4.5/10, 45%) vs 2578-rated opposition	-0.9
BCF-ch Blackpool, 1988	2603 (#139 on August 1988 list)	2676	+6 (8.5/11, 77%)	+5 (7.5/10, 75%) vs 2553-rated opposition	+1.9
Thessaloniki ol (Men), 1988	2621 (#113 on November 1988 list)	[2407]	-1 (1.5/4, 38%)	-1 (1.5/4, 38%) vs 2441-rated opposition	-1.3
BCF-ch Plymouth, 1989	2588 (#194 on July 1989 list)	2578	+5 (8/11, 73%)	+3 (5.5/8, 69%) vs 2487-rated opposition	+0.6
Groningen op, 1989	2582 (#226 on December 1989 list)	2425	= (4.5/9, 50%)	= (4.5/9, 50%) vs 2401-rated opposition	-1.9
Reykjavik, 1990	2534 (#391 on March 1990 list)	2632	+1 (3.5/6, 58%)	+1 (3.5/6, 58%) vs 2634-rated opposition	+1.2
Eastbourne (BCF Championship), 1990	2566 (#253 on July 1990 list)	2621	+5 (8/11, 73%)	+2 (5/8, 63%) vs 2577-rated opposition	+1.1
Hastings Challengers 9091, 1990	2580 (#218 on December 1990 list)	2509	+3 (6.5/10, 65%)	= (3.5/7, 50%) vs 2512-rated opposition	-0.6
Hastings Challengers 9192, 1991	2558 (#306 on December 1991 list)	2402	+2 (5/8, 63%)	-1 (2/5, 40%) vs 2426-rated opposition	-1.3
BCF-ch Plymouth, 1992	2508 (#519 on August 1992 list)	2559	+5 (8/11, 73%)	+4 (7/10, 70%) vs 2441-rated opposition	+1.2
Hastings op 9394, 1993	2467 (#749 on December 1993 list)	2534	+3 (5.5/8, 69%)	+2 (4/6, 67%) vs 2463-rated opposition	+1.0
London (Lloyds Bank Open), 1994	2483 (#649 on August 1994 list)	2493	+3 (6.5/10, 65%)	+1 (4.5/8, 56%) vs 2452-rated opposition	+0.2
BCF-chT 9697 England, 1996	2488 (#672 on January 1996 list)	2466	+3 (7.5/12, 63%)	= (4/8, 50%) vs 2454-rated opposition	-0.3
BCF-ch Hove, 1997	not rated on August 1997 list	2423	= (5.5/11, 50%)	-1 (2.5/6, 42%) vs 2447-rated opposition	N/A
BCF-chT 9798 (4NCL) England, 1997	not rated on October 1997 list	2451	+4 (6.5/9, 72%)	+1 (3.5/6, 58%) vs 2398-rated opposition	N/A
BCF-chT 9899 (4NCL) England, 1998	2412 (#1435 on October 1998 list)	2461	+1 (5/9, 56%)	= (3.5/7, 50%) vs 2450-rated opposition	+0.3
BCF-chT 9900 (4NCL) England, 1999	2359 (#2077 on October 1999 list)	2568	+3 (6.5/10, 65%)	+4 (6.5/9, 72%) vs 2446-rated opposition	+2.9
BCF-chT 0001 (4NCL) England, 2000	2478 (#681 on September 2000 list)	2496	+4 (6/8, 75%)	+3 (5/7, 71%) vs 2378-rated opposition	+0.7
BCF-chT 0102 (4NCL) Birmingham, 2001	2502 (#560 on September 2001 list)	[2506]	+1 (3/5, 60%)	+2 (3/4, 75%) vs 2418-rated opposition	+0.6