

**(1) Korshunov, Vladimir - Latash, Albert [B78]**

USSR Armed Forces ch corr, 1977

[*Sh Riga 14/1978*]

1.e4 c5 2.Nf3 d6 3.d4 cxd4 4.Nxd4 Nf6 5.Nc3 g6 6.Be3 Bg7 7.f3 0-0 8.Qd2 Nc6 9.Bc4 Bd7 10.h4 Rc8 11.Bb3 Ne5 12.0-0-0 Nc4 13.Bxc4 Rxc4 14.h5 b5! 15.hxg6 fxc6 16.e5! dxe5 17.Ne6 Qc8 18.Nxf8 [18.Nxg7 Rf7! 19.Bh6 b4!] 18...Bxf8 19.Kb1 b4 20.Ne4 [20.Nd5 Be6 21.Nxb4 Qb8 22.Nd3 Nd5! →; 20.Ne2 e6 21.b3 Rc6 22.Bxa7 Qa6! 23.Be3 Rxc2! ♯ Kiselev-Latash, 14 USSR corr ch sf] 20...Bf5 21.Nxf6+ exf6 22.Qd5+!? Be6! 23.Qa5! Rxc2 24.Rd8 [24.Rc1 Rc4 25.Qxa7 (25.g4 a6!) 25...Bf5+ 26.Ka1 g5] 24...Rxb2+! 25.Ka1 [25.Kxb2 Qc3+ 26.Kb1 Bf5+] 25...Rb1+! 26.Rxb1 [26.Kxb1 Bf5+] 26...Qc3+ 27.Rb2 Qe1+ ½-½

**(2) Volkov, Aleksandr - Latash, Albert [B78]**

USSR Armed Forces ch corr, 1977

[*Sh Riga 14/1978*]

1.e4 c5 2.Nf3 d6 3.d4 cxd4 4.Nxd4 Nf6 5.Nc3 g6 6.Be3 Bg7 7.f3 0-0 8.Qd2 Nc6 9.Bc4 Bd7 10.h4 Rc8 11.Bb3 Ne5 12.0-0-0 Nc4 13.Bxc4 Rxc4 14.h5 b5! 15.Nce2 Qb8 16.Bh6 Bxh6 17.Qxh6 e5! 18.Ng3!? exd4 19.e5 Qc7! [19...dxe5? 20.hxg6 fxc6 21.Ne4] 20.exf6 Rxc2+ 21.Kb1 Rxb2+! 22.Kxb2 [22.Ka1 Rxa2+!] 22...Qc3+ 23.Kb1 Qb4+ 24.Ka1 Qc3+ ½-½

**(3) Kerik, Mati - Latash, Albert [B76]**

Keres mem corr corr, 1986

1.e4 c5 2.Nf3 d6 3.d4 cxd4 4.Nxd4 Nf6 5.Nc3 g6 6.Be3 Bg7 7.f3 0-0 8.Qd2 Nc6 9.0-0-0 d5 10.exd5 Nxd5 11.Nxc6 bxc6 12.Nxd5 cxd5 13.Qxd5 Qc7 14.Qc5 Qb7 15.Qa3 Bf5 16.Ba6 Qc7 17.Bd3 Rab8 18.c3 Qe5 19.Qc5 Qe6 20.Bc4 Qf6 21.Qd4 Qc6 22.Qf4 e5 23.Qh4 Bf6 0-1

**(4) Latash, Albert - Anzhans, E [C63]**

Keres mem corr corr, 1986

1.e4 e5 2.Nf3 Nc6 3.Bb5 f5 4.Nc3 Nd4 5.Bc4 d6 6.0-0 Nf6 7.exf5 Nxf5 8.d4 e4 9.Bg5 c6 10.Bxf6 gxf6 11.Ne5 d5 12.Qh5+ Ke7 13.Qf7+

Kd6 14.Bxd5 Be7 15.Nc4+ Kc7 16.Bxe4 Nxd4 17.Qg7 Rg8 18.Qh6 b5 19.Qf4+ Kb7 20.Rad1 bxc4 21.Rxd4 Qc7 22.Qxc7+ Kxc7 23.Rxc4 1-0

**(5) Latash, Albert - Sammut, Ronald [C06]**

Keres mem corr corr, 1986

1.e4 e6 2.d4 d5 3.Nd2 Nf6 4.e5 Nfd7 5.Bd3 c5 6.c3 Nc6 7.Ne2 cxd4 8.cxd4 f6 9.exf6 Nxf6 10.Nf3 Bd6 11.0-0 0-0 12.Bg5 Qc7 13.Nc3 a6 14.Bh4 g6 15.Bg3 Bxg3 16.hxg3 Qg7 17.Qd2 Bd7 18.Rfe1 Ng4 19.Bc2 Rac8 20.Rac1 Rxf3 21.gxf3 Nxd4 22.Bd1 Ne5 23.Kg2 Nc4 24.Qg5 Nxb2 25.Nxd5 Rxc1 26.Qd8+ Qf8 27.Nf6+ Kg7 28.Qxd7+ Qf7 29.Ne8+ Kf8 30.Qxd4 Rxd1 31.Rxd1 Nxd1 32.Nd6 1-0

**(6) Latash, Albert - Schneider, Wolfgang [C57]**

corr corr, 1989

1.e4 e5 2.Nf3 Nc6 3.Bc4 Nf6 4.Ng5 Bc5 5.Nxf7 Bxf2+ 6.Kf1 Qe7 7.Nxh8 d5 8.exd5 Nd4 9.c3 Bg4 10.d6 Qd7 0-1

**(7) Shchebenyuk, Mikhail - Latash, Albert [B78]**

URS corr USSR, 1990

1.e4 c5 2.Nf3 d6 3.d4 cxd4 4.Nxd4 Nf6 5.Nc3 g6 6.Be3 Bg7 7.f3 Nc6 8.Qd2 0-0 9.Bc4 Bd7 10.h4 Rc8 11.Bb3 Ne5 12.0-0-0 Nc4 13.Bxc4 Rxc4 14.h5 b5 15.hxg6 fxc6 16.e5 dxe5 17.Ne6 Qc8 18.Nxg7 Rf7 19.Bh6 b4 20.Ne4 Nxe4 21.fxe4 Rd4 22.Qe3 Rc4 23.Rd2 Bg4 24.Qb3 Rxg7 25.Bxg7 Kxg7 26.Qe3 h5 27.Qxa7 Rxe4 28.Qxe7+ Kh6 29.Rd8 1-0

**(8) Latash, Albert (2285) -**

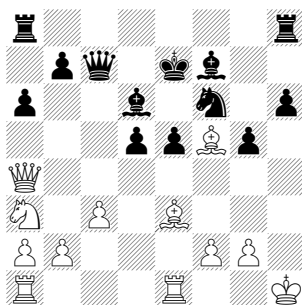
**Donnelly, Michael J (2375) [B22]**

Russia CCA-5 years 1998-2002 corr RCCA, 1998

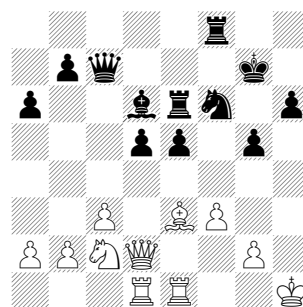
[*M.J.Donnelly*]

1.e4 c5 2.d4 cxd4 3.c3 Nf6 4.e5 Nd5 5.Qxd4 e6 6.Nf3 Nc6 7.Qe4 f5 8.exf6 Nxf6 9.Qh4 It was not a surprise to reach this sort of position since a database search indicated my opponent had a sharp but slightly risky style. 9...d5 [9...Be7 10.Bd3 d5 (10...0-0 11.Bg5 h6 12.Bxh6 gxh6 13.Qg3+ Kh8 14.Qg6 Bd6 15.Qxh6+ Kg8 16.Qg6+ and white took a draw

in Vdovin-Lopushnoy, Geller Mem 1999.)  
 11.Bg5 e5 12.Bg6+ Kf8ч Pye-Ghasi, 4NCL  
 2000.] **10.Bd3 Bd6** [10...e5 11.Bg6+ hxg6  
 12.Qxh8 e4 13.Nd4 again with a murky  
 position, Govedarica-Velimirovic, Novak  
 Nikoloc Mem 2000.] **11.Bg6+** [11.Ng5 Ke7  
 12.Nxh7 Kd7 13.Nxf6+ gxf6 14.Qg4 Kc7  
 15.Bf4 Rg8 16.Bxd6+ Kxd6 17.Qe2 Rxg2 is  
 another unbalanced line from  
 Taboada-Esplana, Lima 2000.; 11.Bg5 e5  
 12.Nbd2 e4 13.Bxe4 dxe4 14.Nxe4 0-0  
 15.0-0-0± Jakymov-Gajewski, Halkidiki 2001]  
**11...Ke7** Aiming for safety in the centre behind  
 a solid wall of pawns. Alternatively heading  
 towards the queenside is an option, for  
 example [11...Kd7 12.Bc2 Kc7 13.Be3 Bd7±  
 but the black king remains a little exposed  
 Kos-Ilic, Bled Open 2001] **12.Bc2 h6 13.Bg6**  
**Bd7 14.0-0** [14.Bf4 lost a tempo in what  
 seems to be the stem game of this line. 14...e5  
 15.Bg3 Be8 16.Bxe8 Rxe8 17.Qa4 Kf7±  
 Novopashin-Sveshnikov, USSR 1981.]  
**14...Be8 15.Bc2** More sensible than later  
 games as e6 is left weak and the bishop on e8  
 is slightly misplaced. [15.Bxe8 Qxe8 16.Nd4  
 (16.c4? g5 17.Qh3 g4-+ Kartmann-Schneider,  
 Bruchkoebel MVT 1999.) 16...Kf7 17.Be3 Ne5  
 18.f3 Nc4 19.Bc1 e5± Frois-Yakovich,  
 Magistral de VRSA 2000.] **15...Bf7** In  
 anticipation of White's coming 18th, which  
 offers a pawn. **16.Re1 g5 17.Qa4 Qc7 18.Bf5**  
**Ne5** [18...g4 19.Nd4 Bxh2+ 20.Kh1 Nxd4  
 21.Qxd4 with play for the pawn.] **19.Nxe5**  
 [19.Nbd2!? exf5 20.Nxe5 (20.Nd4 Kf8-+;  
 20.Qd4 Ne4-+) 20...Bxe5 21.Nf3 (21.Qd4  
 Ne4-+) 21...Ne4 22.Nxe5 Qxe5 23.f3 seems  
 relatively best although Black remains a safe  
 pawn up.] **19...Bxe5 20.Bd3 Bxh2+ 21.Kh1 Bd6**  
**22.Na3 a6** Careful play to prevent Nb5 and also  
 c4 opening more lines to the black king.  
**23.Be3 e5 24.Bf5** Diagram



[24.Bd4 is nullified by 24...Be6 and after ;  
 24.c4 dxc4 25.Rac1 simply 25...b5 is  
 winning.] **24...Kf8** This is a move I would have  
 played immediately in an otb game but was  
 confirmed by analysis as best. Here the  
 tempting [24...b5 25.Qd1 Bxa3 26.bxa3  
 Qxc3 27.Rc1 leaves the black king exposed.]  
**25.Qd1 Kg7 26.Nc2 Rae8** The final stage of the  
 consolidation plan. Black will exchange off the  
 white squared bishops to eliminate possible  
 light-square attacks. **27.Qd2 Be6** ♗xg5 is not  
 a serious threat with the white king on h1.  
 [27...Qc4 28.Kg1 Qh4 29.Bb6 Rhf8 is  
 premature as White gets play after 30.Ne3]  
**28.Bxe6 Rxe6 29.Rad1 Rf8** [29...Qc4 30.Ba7  
 Qxa2 (30...Qh4+ 31.Kg1 Ra8 32.Nd4 exd4  
 33.Rxe6 Bh2+ 34.Kf1 Rxa7 35.Re7+ Kf8  
 36.Rde1 dxc3 37.Qxc3 Qc4+ 38.Qxc4 dxc4  
 39.g3=) 31.Nd4 when Black's advantage has  
 vanished.] **30.f3** Diagram



Weakens the kingside but White must prevent  
 ...♗g4 or ...♗e4 options for Black. **30...Qf7**  
 With nothing occurring on the queenside and  
 the centre (since d4 or e4 are impractical)  
 Black must break through on the king-side with  
 a sacrifice. **31.g4 h5 32.Bxg5** [32.gxh5 Qxh5+  
 33.Kg1 Qxf3 34.Bxg5 Ne4-+; 32.Rf1 hxg4  
 33.fxg4 Rh8+ 34.Kg1 Rh4-+; 32.Qg2 hxg4  
 33.fxg4 Qg6 34.Ba7 Nxc4 35.Qxc4 Rh8+  
 36.Kg1 Qxc2-+] **32...Nh7 33.Nd4** [33.Rf1  
 Nxc4 34.Qxc4+ Rg6 35.Qh4 hxg4 36.fxg4  
 Qe6-+; 33.f4 hxg4 34.Qxd5 Nxc4 35.fxg5  
 Qf3+ 36.Qxf3 gxf3-+] **33...exd4 34.Rxe6 Qxf3+**  
 [34...Qxf3+ 35.Kg1 Qxc4+ 36.Kh1 Qh3+  
 37.Kg1 Qxe6] 0-1

(9) Belinkov, Arkady (2420) -  
 Latash, Albert (2285) [B52]

RCCA-Jub05 corr RCCA corr, 1998  
1.e4 c5 2.Nf3 d6 3.Bb5+ Bd7 4.Bxd7+ Qxd7  
5.0-0 Nf6 6.e5 dxe5 7.Nxe5 Qc8 8.Na3 Nc6  
9.Nac4 Nxe5 10.Nxe5 Qc7 11.Re1 e6 12.c3  
Bd6 13.Qa4+ Kf8 14.d4 h5 15.h3 cxd4 16.cxd4  
a6 17.Bg5 b5 18.Qb3 Bxe5 19.dxe5 Nd5  
20.Rac1 Qb7 21.Qc2 Kg8 22.a3 Ra7 23.Re2  
Qd7 24.Qe4 Rc7 25.Rec2 Rxc2 26.Qxc2 Qa7  
27.Qe4 Qd7 28.Rc5 g6 29.Bf6 Nxf6 30.exf6  
Qd1+ 31.Kh2 Qd6+ 32.Re5 h4 33.f4 Rh5  
34.Qa8+ Qf8 35.Qxf8+ Kxf8 36.Rxh5 gxh5  
37.g4 Kg8 38.gxh5 Kh7 39.Kg2 Kh6 40.Kf3  
Kxh5 41.Ke4 a5 42.Ke5 Kh6 43.b3 Kg6 44.b4  
a4 45.Kd6 Kf5 46.Kd7 Kxf6 47.Kc6 e5  
48.fxe5+ Kxe5 49.Kxb5 f5 50.Kc5 f4 51.b5 f3  
52.b6 f2 53.b7 f1Q 54.b8Q+ Ke4 55.Qb4+ Ke5  
56.Qd4+ Ke6 57.Qe4+ Kf7 58.Qxa4 Qxh3  
59.Qf4+ ½-½

**(10) Karelin, Evgeny (2170) -  
Latash, Albert (2285) [D51]**

RCCA-Jub05 corr RCCA corr, 1998  
1.d4 Nf6 2.c4 e6 3.Nf3 d5 4.Bg5 Nbd7 5.Nc3  
c6 6.e4 dxe4 7.Nxe4 Qa5+ 8.Nfd2 Nxe4 0-1

**(11) Kazoks, Aivars (2415) -  
Latash, Albert (2285) [B76]**

RCCA-Jub05 corr RCCA corr, 1998  
1.e4 c5 2.Nf3 d6 3.d4 cxd4 4.Nxd4 Nf6 5.Nc3  
g6 6.Be3 Bg7 7.f3 0-0 8.Qd2 Nc6 9.0-0-0 d5  
10.Kb1 Nxd4 11.e5 Nc6 12.exf6 Bxf6 13.Nxd5  
Bg7 14.Bc5 Be6 15.Bb5 Bxd5 16.Qxd5 e6  
17.Qb3 Qc7 18.Bxf8 Rxf8 19.c3 a6 20.Bxc6  
bxc6 21.g3 Rb8 22.Rd7 Qe5 23.Qc4 Qa5  
24.Rc1 Qf5+ 25.Qd3 Qa5 26.Rd1 Bf6 27.Rd2  
Kg7 28.Qc4 Qf5+ 29.Qe4 Qxe4+ 30.fxe4 Bxc3  
31.Rf2 Bf6 32.e5 Bxe5 33.Rxf7+ Kh6  
34.Rxh7+ Kg5 35.Rd2 c5 36.Re2 Bd4 37.Re7  
1-0

**(12) Kokorin, Vladimir - Latash, Albert  
(2285) [A00]**

RCCA-Jub05 corr RCCA corr, 1998  
1.Nc3 d5 2.e4 dxe4 3.Nxe4 e5 4.Bc4 Nc6  
5.d3 Be7 6.Nf3 Bg4 7.h3 Bh5 8.Ng3 Bg6  
9.0-0 Nf6 10.Bb5 Qd5 11.Bxc6+ bxc6 12.Re1  
Nd7 13.Qe2 f6 14.Nh4 0-0 15.Qg4 Kf7  
16.Ngf5 Rfe8 17.Nxe7 Rxe7 18.Be3 Rb8 19.b3  
a5 20.Rad1 Qe6 21.Qxe6+ Rxe6 22.f4 exf4

23.Bxf4 Rxe1+ 24.Rxe1 Rc8 25.Nxg6 hxg6  
26.Re4 Nb6 27.Bh2 c5 28.g4 g5 29.a3 c4  
30.bxc4 c5 31.Re1 Na4 32.Rb1 Re8 33.Rb7+  
Kg8 34.Rb8 Rxb8 35.Bxb8 Kf7 36.Bc7 Ke7  
37.Bxa5 Kd7 38.Kf2 g6 39.Kf3 f5 40.Bd2 f4  
41.Be1 1-0

**(13) Latash, Albert (2285) -  
Bramburg, Boris [C82]**

RCCA-Jub05 corr RCCA corr, 1998  
1.e4 e5 2.Nf3 Nc6 3.Bb5 a6 4.Ba4 Nf6 5.0-0  
Nxe4 6.d4 b5 7.Bb3 d5 8.dxe5 Be6 9.Nbd2  
Nc5 10.c3 Bg4 11.Bc2 Be7 12.Re1 0-0 13.Nf1  
f6 14.exf6 Bxf6 15.Be3 Be7 16.Qb1 Bxf3  
17.Bxh7+ Kh8 18.gxf3 Ne5 19.Nd2 Ncd7  
20.Bf5 c6 21.f4 Nf7 22.Be6 Nh6 23.Nf3 Re8  
24.Ne5 Nxe5 25.fxe5 Bf8 26.Qg6 Qh4 27.Bxh6  
Qxh6 28.Qxh6+ gxh6 29.Bd7 Red8 30.e6 Ra7  
31.Bxc6 Rg7+ 32.Kh1 d4 33.Rad1 Rd6  
34.Rxd4 Rxc6 35.Rd8 Rg8 36.e7 Bxe7  
37.Rxg8+ Kxg8 38.Rxe7 Rd6 39.Re2 Kf7  
40.Kg2 Kf6 41.Rc2 Ke5 42.c4 bxc4 43.Rxc4  
Rd2 44.Rc6 Rxb2 45.Rxa6 Kf4 46.a4 Kg5  
47.h4+ 1-0

**(14) Latash, Albert (2285) -  
Grebenshchikov, Mikhail (2380) [C80]**

RCCA-Jub05 corr RCCA corr, 1998  
1.e4 e5 2.Nf3 Nc6 3.Bb5 a6 4.Ba4 Nf6 5.0-0  
Nxe4 6.d4 b5 7.Bb3 d5 8.dxe5 Be6 9.Nbd2  
Nc5 10.c3 d4 11.Ng5 Qxg5 12.Qf3 0-0-0  
13.Bxe6+ fxe6 14.Qxc6 Qxe5 15.b4 Qd5  
16.Qxd5 exd5 17.bxc5 dxc3 18.Nb3 d4 19.Ba3  
Be7 20.Bb4 Bf6 21.a4 Kd7 22.axb5 axb5  
23.Rfd1 Ke6 24.Rac1 Kf5 25.f3 Rhe8 26.Rd3  
Bg5 27.Rc2 c6 28.Kf1 Bf6 29.Re2 Rxe2  
30.Kxe2 Ke6 31.g3 Re8 32.Kd1 Kd5 33.Na5  
Ra8 34.Kc2 Bd8 35.Bxc3 Bxa5 36.Bxd4 Kc4  
37.Bxg7 ½-½

**(15) Latash, Albert (2285) -  
Limonnikov, Gennady (2210) [C63]**

RCCA-Jub05 corr RCCA corr, 1998  
1.e4 e5 2.Nf3 Nc6 3.Bb5 f5 4.Nc3 fxe4  
5.Nxe4 d5 6.Nxe5 dxe4 7.Nxc6 Qg5 8.Qe2 Nf6  
9.f4 Qxf4 10.Nxa7+ Bd7 11.Bxd7+ Kxd7  
12.Qb5+ Ke6 13.Qc4+ Kd7 14.Qb5+ Ke6 ½-½

**(16) Latash, Albert (2285) -**

**Rezvyakov,Aleksandr [B21]**

RCCA-Jub05 corr RCCA corr, 1998

1.e4 c5 2.d4 cxd4 3.c3 dxc3 4.Nxc3 Nc6  
 5.Nf3 e6 6.Bf4 Bb4 7.Bc4 Nf6 8.Qe2 Nxe4  
 9.Qxe4 d5 10.Bxd5 Qxd5 11.Qxb4 Nxb4  
 12.Nxd5 Nxd5 13.Bd6 b6 14.0-0 Ba6 15.Rfc1  
 Kd7 16.Ba3 Rhc8 17.Ne5+ Ke8 18.g3 f6  
 19.Nc6 Bb5 20.Nb4 Ne7 21.b3 Rxc1+ 22.Rxc1  
 a5 23.Nc2 Rd8 24.Ne3 Rd7 25.Nc4 Bxc4  
 26.Rxc4 Rd1+ 27.Kg2 Nd5 28.Bc1 Kd7 29.a3  
 Rd3 30.b4 axb4 31.axb4 Rb3 32.Rh4 h6  
 33.Bd2 Rb2 34.Be1 e5 35.Kf1 Rc2 36.b5 Nc7  
 37.Ra4 Nxb5 38.Ra6 Kc7 39.Ra8 Kb7 40.Rg8  
 Rc7 41.Bb4 Nd4 42.h4 Kc6 43.Rd8 Rd7  
 44.Rc8+ Kd5 45.Rc3 Ra7 46.h5 Ra4 47.Bf8  
 Ne6 48.Be7 Ra7 49.Bb4 b5 50.Rc8 Rc7  
 51.Rb8 Kc4 52.Ba5 Rd7 53.Rc8+ Nc5 54.Bb6  
 Rd5 55.Rc7 b4 56.Rxg7 b3 57.Bxc5 Rxc5  
 58.Rb7 Rb5 59.Rc7+ Kb4 60.Rc1 b2 0-1

**(17) Latash,Albert (2285) -****Shishigin,Nikolai (2395) [B53]**

RCCA-Jub05 corr RCCA corr, 1998

1.e4 c5 2.Nf3 d6 3.d4 Nf6 4.dxc5 Nxe4  
 5.cxd6 Nc6 6.dxe7 Qxd1+ 7.Kxd1 Bxe7 8.Be3  
 Bg4 9.Bb5 0-0-0+ 10.Kc1 Bxf3 11.gxf3 Ng5  
 12.Bxc6 bxc6 13.Nd2 Rd5 14.c3 Rhd8 15.Kc2  
 Bc5 16.Rad1 Nh3 17.Ne4 Bb6 18.Rxd5 Rxd5  
 19.Rd1 Rxd1 20.Kxd1 Ng1 21.f4 Kd7 22.Nd2  
 Ke6 23.Nc4 Bxe3 24.fxe3 Nf3 25.h3 Ng1  
 26.Ne5 c5 27.Nd3 Nxb3 28.Nxc5+ Kd5 29.b4  
 Kc4 30.Kd2 Nf2 31.e4 h5 32.e5 h4 33.Ke2 Ng4  
 34.Ne4 h3 35.Kf3 h2 36.Kg2 Kd3 37.Nd6 Kxc3  
 38.b5 Kb4 39.Nxf7 Kxb5 40.Ng5 Kc6 41.Nf3  
 Kd5 42.Nxh2 Nxe5 43.fxe5 Kxe5 ½-½

**(18) Latash,Albert (2285) -****Taylor,William Desmond (2435) [B71]**

RCCA-Jub05 corr RCCA corr, 1998

1.e4 c5 2.Nf3 d6 3.d4 cxd4 4.Nxd4 Nf6 5.Nc3  
 g6 6.f4 Nc6 7.Nxc6 bxc6 8.e5 Nd7 9.Bc4 Nb6  
 10.exd6 Qxd6 11.Qxd6 exd6 12.Bd3 f5 13.0-0  
 Bg7 14.Ne2 0-0 15.c3 Re8 16.Nd4 Bd7 17.b3  
 c5 18.Ne2 d5 19.Kf2 c4 20.Bc2 cxb3 21.Bxb3  
 Bb5 22.Re1 Bxe2 23.Rxe2 Bxc3 24.Rb1 Bd4+  
 25.Kf3 Re4 26.Be3 Rae8 27.Bxd4 Rxe2  
 28.Bxb6 axb6 29.Bxd5+ Kg7 30.Kg3 Rd2  
 31.Rb5 Re3+ 32.Bf3 Rd6 33.Kf2 Ra3 34.Bd5  
 Rd3 35.Bc4 R3d4 0-1

**(19) Peljo,Kalevi (2380) - Latash,Albert (2285) [B78]**

RCCA-Jub05 corr RCCA corr, 1998

1.e4 c5 2.Nf3 d6 3.d4 cxd4 4.Nxd4 Nf6 5.Nc3  
 g6 6.Be3 Bg7 7.f3 0-0 8.Qd2 Nc6 9.Bc4 Bd7  
 10.0-0-0 Rc8 11.Bb3 Ne5 12.h4 Nc4 13.Bxc4  
 Rxc4 14.h5 b5 15.hxg6 fxc6 16.e5 dxe5  
 17.Ne6 Qc8 18.Nxf8 Bxf8 19.Kb1 b4 20.Nd5  
 Be6 21.Nxb4 Qb8 22.a3 a5 23.Na2 Bf5 24.Nc3  
 Kf7 25.g4 Be6 26.Ne4 Rxe4 27.fxe4 Bxg4  
 28.Rdf1 Kg8 29.Qxa5 h5 30.Bg5 Kg7 31.Re1  
 Be6 32.Bd2 Bf7 33.Bc3 Ng4 34.Reg1 Kg8  
 35.Rxg4 1-0

**(20) Peschardt,Soren (2270) -****Latash,Albert (2285) [B50]**

RCCA-Jub05 corr RCCA corr, 1998

1.e4 c5 2.Nf3 d6 3.c3 Nf6 4.Bd3 g6 5.Bc2  
 Nc6 6.h3 Bg7 7.0-0 b5 8.d4 cxd4 9.cxd4 Bb7  
 10.Re1 0-0 11.Nc3 a6 12.Bg5 Nd7 13.Qd2  
 Re8 14.Rac1 Qa5 15.a3 Rac8 16.Bh6 Bh8  
 17.Bb3 b4 18.Ng5 e6 19.Qf4 Bf6 20.axb4  
 Qxb4 21.Ba4 Qxd4 22.Rcd1 Qe5 23.Qe3 Be7  
 0-1

**(21) Smith,Roland (2380) -****Latash,Albert (2285) [A28]**

RCCA-Jub05 corr RCCA corr, 1998

1.c4 e5 2.Nc3 Nf6 3.Nf3 Nc6 4.e3 Be7 5.a3  
 0-0 6.b4 d6 7.Qc2 Re8 8.Bb2 Bf8 9.d3 g6  
 10.Be2 Bg7 11.h3 a6 12.0-0 d5 13.Nxd5 Nxd5  
 14.cxd5 Qxd5 15.Ng5 Bd7 16.Ne4 Rad8  
 17.Bf3 Qb5 18.Nc3 Qb6 19.Nd5 Qa7 20.Nxc7  
 Rf8 21.Rac1 Rc8 22.Nd5 Kh8 23.Qc5 Qxc5  
 24.Rxc5 Rcd8 25.Nb6 Be8 26.Rd5 Rxd5  
 27.Bxd5 f6 28.Rc1 h5 29.Nc4 Bh6 30.Nd6 Nd4  
 31.exd4 Bxc1 32.Bxc1 Bc6 33.Bxc6 bxc6  
 34.dxe5 fxe5 35.Nc4 1-0

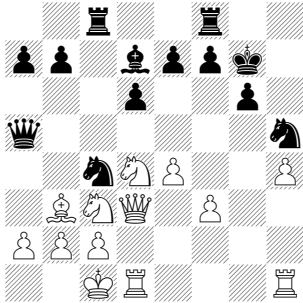
**(22) Vesely,Pavol - Latash,Albert [B77]**

Slav Cup-1 bd3 corr, 1999

*[Vesely]*

1.e4 c5 2.Nf3 d6 3.d4 cxd4 4.Nxd4 Nf6 5.Nc3  
 g6 6.Be3 Bg7 7.f3 0-0 8.Qd2 Nc6 9.Bc4 Bd7  
 10.Bb3 Rc8 11.h4 Ne5 12.g4?! [12.Qe2 h5+;  
 12.h5 Nxh5 13.Bh6] 12...h5! = [12...Nfxg4  
 13.fxc4 Bxg4 14.Rf1 Bh3 15.Rg1±; 12...Rc4  
 13.Qe2± △ 14.h5±] 13.gxh5 [13.Bh6 hxg4

14.h5 Nc4 (14...Qb6 15.0-0-0 Nc4 16.Bxc4 Rxc4 17.Bxg7 Kxg7 18.fxg4 (18.hxg6 fxg6±) 18...Nxc4±) 15.Bxc4 Rxc4 16.Bxg7 Kxg7 17.0-0-0 Rh8 18.hxg6 fxg6±; 13.g5 Ne8 (13...Nh7?! 14.0-0-0 Qa5 15.Kb1±) 14.0-0-0 Nc4 15.Bxc4 Rxc4±; 13.Bg5? hxg4 14.h5 Nxc4 15.fxg4 Bxg4 16.Nd5 Re8-+] **13...Nxc4** **14.Rg1!?** N [14.Bh6 Qb6 a) 14...Bxc4 15.Qxh6 e6 16.Qe3 Qf6±; b) 14...Qa5!? 15.Bxg7 Kxg7 16.0-0-0 Nc4 17.Qd3



(17.Bxc4 Rxc4 18.Rhg1 Rh8 19.Rg5±) 17...Nf4 18.Qf1 Ne3 19.Qf2 Nxd1 20.Nxd1 Nd3+ 0-1 Alexanian,V-Petrosian,T/Yerevan op 1996 (20); 15.Bxg7±; 14.Kf2 Nc4 15.Bxc4 Rxc4±; 14.0-0-0 Nc4 15.Bxc4 Rxc4 16.Nde2 Qa5 17.Bd4 Rfc8 18.Bxg7 Kxg7 19.Qd5 Qxd5 ½-½ Cordes,M-Schellmann,M/NRW ch 1995 (43)] **14...Nc4** [14...e6 15.Bg5 (15.0-0-0!? Qa5 16.Kb1±) 15...Qb6 16.0-0-0±; 14...a5 15.0-0-0 b5 16.a3 b4 17.axb4 axb4 18.Na2 Nc4 19.Bxc4 Rxc4 20.b3 Rc5 21.Nxb4±; 14...Kh7 15.Rd1 (15.0-0-0 △ ♖b1) 15...Qa5 16.Nd5 Qxd2+ 17.Rxd2 e6±] **15.Bxc4 Rxc4** **16.0-0-0** [16.Nde2 Qa5 17.Nd5 a) 17.Rg5 Qa6 (17...b5!?) 18.0-0-0±) 18.Rg2 (18.Rg1 Rfc8±) 18...Rfc8± 19.0-0-0? Rxc3 20.Nxc3 Rxc3 21.Kb1 Be6 22.b3 Qa3-+; b) 17.0-0-0 △ 18.♖b1± 17...Rfc8 18.Kb1 Bf6! (18...Rxc3 19.Nxc3 Rxc3 (19...Bxc3!? 20.bxc3 Be6 21.c4 Qa4 △ ♗xc4±) 20.Rg5 Qa6 (20...b5 21.e5 Be6 22.Qxc3 Bxa2+ 23.Kc1 Qxc3 24.bxc3 Bxe5 25.Kb2 Bc4 26.Ra1±) 21.bxc3 Be6 22.c4 Qa3 23.Rb5 Bxc4 24.Rb3 Qa4 25.Bd4 Bxd4 26.Qxd4 Bxb3 27.cxb3 Qxd4 28.Rxd4 Nf4 29.Rb4 b6 30.Ra4 a5 31.b4 Ng2 32.Rxa5!!) 19.Nd5 Qd8 (19...Qxd2 20.Rxd2 Bxh4 21.Rh1 Bf6 22.Nef4 Nxf4 23.Bxf4 R4c5 24.Nxf6+ exf6 25.Rdh2 Rh5 26.Rxh5 gxh5 27.Rxh5± ♣) 20.Nxf6+ Nxf6 21.Rc1 d5±; c) 17.Rd1 Re8 (17...Rfc8 18.Nd5) 18.Rg5 Qa6 19.Bd4±;

17...Qxd2+ 18.Kxd2 e6 19.Ndc3=; 16.Kf2 Nf4 17.Rh1± (17.Bxf4 Rxd4±); 16.Nce2 e5 17.Nb3 Qxh4+ 18.Bf2 Qf6±; 16.f4?! Nxf4 17.b3 Rxd4 18.Bxd4 Bxd4 19.Qxd4 e5 20.Qe3 Qxh4+ 21.Qg3 (21.Kd2 Qh2+ 22.Kc1 Nd3+ 23.cxd3 Rc8 24.Qe1 Rxc3+ 25.Qxc3 Qxg1+) 21...Qxg3+ 22.Rxg3 f5 23.exf5 Bxf5 24.Rd1 Rd8 25.Rd2 Kf7±; 16.Nf5 gxf5 (16...Bh8?! 17.Nd5 Bxf5 18.exf5 e6±; 16...Bxc3! 17.bxc3 b5±) 17.Bh6 Kh7 (17...Qb6 18.0-0-0 Rxc3) 18.Bxg7 Nxc4 19.Rxg7+ Kxg7=] **16...Kh7** [16...Qc7!? 17.Nd5 Qd8 18.Rg5 e6 19.Nc3 Qf6 20.e5 dxe5 21.Ne4 Qe7 22.Nb3 Bb5 23.Bc5 Rxc5 24.Nbxc5 Nf4=; 16...Qb8 17.Nd5 Re8±; 16...e6 17.Nde2±] **17.Rg5** [17.Qd3 Qc8 (17...Qc7?? 18.Nd5+-) 18.Rg5? Nf4 19.Qd2±; 17.Nd5 b5 18.Nf5 Bxf5 19.exf5 e6 20.b3 Rc6 21.Bg5 Qe8±] **17...Bf6** [17...Nf4!? 18.Nde2 (18.Rh1 Nh5 (18...Kg8 19.Nf5) 19.Qd3 (19.Rhg1 Bf6 20.Rxh5+ gxh5 21.e5)) 18...Ne6 △ ♗a5; 17...Rh8 18.Qd3 Rc8 19.e5 Kg8 20.e6 Be8 21.Nd5 Rh7 22.Rdg1 Kh8±; 17...e6? 18.Qd3 Rc8 19.Ndb5 Bxb5 20.Nxb5 Qf6 21.e5+-] **18.Rxh5+!** [18.Qd3 Bxg5 19.hxg5 Rc8 20.Rh1 ±/=; 18.Rd5 Bg7 19.Bg5 Bc6 20.Nxc6 bxc6 21.Rd3=; 18.Rg2 Qa5 (18...Bg7 19.Qd3 Qc8 (19...Nf4 20.Qxc4 Nxc2 21.Bg5±) 20.Nd5 (20.Nde2 a6 21.Kb1±) 20...Re8 21.b3 Rc5 22.Ne2±) 19.Kb1 Rfc8 20.Nd5 Qxd2 21.Rgxd2±] **18...gxh5** **19.e5!?** **Rxc3!?** [19...dxe5 20.Qd3+ Kg8 21.Qxc4 exd4 22.Bxd4 Qc8!? 23.Rg1+ (23.Qxc8 Bxc8±) 23...Kh7 24.Qb4±] **20.exf6!± Rc8!?** [20...Rc7 21.Bh6 exf6 (21...Rg8? 22.Bg7 Rxg7 23.fxg7+-) 22.Bxf8 Qxf8 23.Qd3+!? Kh8 24.Qe4±; 20...Rc5!? 21.Qd3+ (21.Ne6 fxe6 22.fxe7 Qxe7 23.Bxc5 dxc5 24.Qxd7±) 21...Kh8 22.Ne6 Rxc2+ 23.Qxc2 Bxe6 24.Bh6 Rg8 25.Bg7+ Rxg7 26.fxg7+ Kxg7 27.Rg1+ Kf8 28.Qh7 Qc7+ 29.Kb1 Ke8 30.Qxh5 Qc6 31.b3 Qc3 32.Qb5+±] **21.Qd3+** [21.Bh6? Rg8 22.Bg7 Rxg7 23.fxg7 e5±] **21...Kh8** **22.Nf5!** [22.fxe7 Qxe7 23.Nf5 Bxf5 24.Bd4+ f6 25.Qxf5±] **22...exf6** **23.Nxd6!+-** [23.Bh6 Bxf5±; 23.Rg1 Rc6=] **23...Qe7** **24.Bxa7 Rc6** **25.Qd5 f5** **26.Nxb7 Rfc8** **27.Bc5** □ **Rxc5** [27...Qxh4 28.Qxf7! Qg5+ 29.Kb1 Rxc5 30.Nxc5-+] **28.Nxc5 Qe3+** **29.Kb1 Rxc5** **30.Qxd7 Kg7** **31.Qd4+** **Re5** **32.Qxe3 Rxe3** **33.c4 Rxf3** **34.c5** **Re3** **35.c6** **Re8** **36.c7** **Rc8** **37.Rc1**

Kf6 38.b4 f4 39.b5 △ b6-b7 1-0

**(23) Kobilyansky,Igor (2402) -  
Latash,Albert (2281) [B70]**

ICCF Slav Cup1 Bd3 corr ICCF email, 1999  
1.e4 c5 2.Nf3 d6 3.d4 cxd4 4.Nxd4 Nf6 5.Nc3  
g6 6.Bg5 Bg7 7.Bb5+ Bd7 8.Qe2 Nc6 9.0-0-0  
Rc8 10.Bxc6 bxc6 11.f4 0-0 12.e5 dxe5  
13.fxe5 Nd5 14.Nxd5 cxd5 15.Rhf1 Qa5 16.Kb1  
e6 17.Qe3 Qc7 18.Bf6 h6 19.Rf3 Kh7 20.Rdf1  
Ba4 21.b3 Qb6 22.Bxg7 Kxg7 23.Rf6 Bb5  
24.R1f3 Be8 25.Nxe6+ fxe6 26.Qxb6 axb6  
27.Rxf8 g5 28.g4 b5 29.R3f7+ Kg6 time 0-1

**(24) Krecak,Zvonko (2436) -  
Latash,Albert (2281) [A20]**

ICCF Slav Cup1 Bd3 corr ICCF email, 1999  
1.a3 e5 2.c4 Nf6 3.e3 d5 4.cxd5 Nxd5 5.Nf3  
Nd7 6.Qc2 Bd6 7.Nc3 Nxc3 8.Qxc3 0-0 9.b4  
Re8 10.e4 Nf6 11.Bc4 Be6 12.Bd3 c5 13.b5 c4  
14.Bc2 Qb6 15.a4 Ng4 16.Rf1 Bc5 17.a5  
Bxf2+ 18.Ke2 Qc5 19.Ba3 Qxb5 20.Rab1 Qc6  
21.Rxf2 Nxf2 22.Kxf2 f6 23.Rg1 Bg4 24.d3  
cxd3 25.Qxc6 bxc6 26.Bxd3 Rad8 27.Be2 Rb8  
28.Rc1 Bd7 29.Nd2 Red8 30.Be7 Re8 31.Bc5  
Rb7 32.a6 Rb2 33.Ke3 g6 34.Bxa7 Rd8  
35.Bc4+ Kg7 36.Rb1 Rxb1 37.Nxb1 Bc8  
38.Bc5 Rd1 39.a7 Bb7 40.Na3 Re1+ 41.Kd2  
1-0

**(25) Latash,Albert (2281) - Kersic,Matej  
[C10]**

ICCF Slav Cup1 Bd3 corr ICCF email, 1999  
1.e4 e6 2.d4 d5 3.Nd2 dxe4 4.Nxe4 Nd7  
5.Nf3 Ngf6 6.Bd3 Be7 7.0-0 Nxe4 8.Bxe4 Nf6  
9.Bd3 0-0 10.Re1 b6 11.Ne5 Bb7 12.c4 c5  
13.dxc5 Bxc5 14.Be3 Bb4 15.Bd2 Bxd2  
16.Qxd2 Qc7 17.Qe3 Rfd8 18.Rac1 Rac8  
19.a3 h6 20.b4 Qe7 21.Bb1 Qd6 22.Qd3 ½-½

**(26) Latash,Albert (2281) -  
Kokorin,Vladimir (2213) [B00]**

ICCF Slav Cup1 Bd3 corr ICCF email, 1999  
1.e4 Nc6 2.d4 d5 3.Nc3 e5 4.Bb5 dxe4 5.d5  
a6 6.Ba4 b5 7.Nxb5 axb5 8.Bxb5 Nge7 9.dxc6  
Qxd1+ 10.Kxd1 Nf5 11.c3 Bc5 12.f4 Be6  
13.fxe5 0-0 14.Kc2 Rfb8 15.Be2 Bxa2 16.b4  
Be3 17.Bxe3 Nxe3+ 18.Kd2 Nxg2 19.Nh3  
Rd8+ 20.Kc2 Ne3+ 21.Kc1 Be6 22.Rxa8 Rxa8

23.Kd2 Ng2 24.Ng1 Ra2+ 25.Kc1 Nf4 26.Bb5  
Nd3+ 27.Bxd3 exd3 28.Kb1 Rf2 0-1

**(27) Latash,Albert (2281) -  
Lukanov,Tsvetomir (2557) [B07]**

ICCF Slav Cup1 Bd3 corr ICCF email, 1999  
1.e4 d6 2.d4 Nf6 3.Nc3 g6 4.f3 c6 5.Be3 b5  
6.Qd2 Nbd7 7.Nh3 Bg7 8.Nf2 0-0 9.Bh6 Bxh6  
10.Qxh6 Qa5 11.Qd2 e5 12.d5 b4 13.Ncd1  
cxd5 14.exd5 Bb7 15.a3 Nxd5 16.Ne4 Qb6  
17.axb4 time 1-0

**(28) Latash,Albert (2281) -  
Mrkvicka,Josef (2365) [B07]**

ICCF Slav Cup1 Bd3 corr ICCF email, 1999  
1.e4 d6 2.d4 Nf6 3.Nc3 g6 4.f3 c6 5.Be3 b5  
6.Qd2 Nbd7 7.Nge2 a5 8.d5 cxd5 9.Nxd5 Bg7  
10.Nd4 Nxd5 11.exd5 b4 12.Bb5 0-0 13.Nc6  
Qe8 14.0-0-0 e5 15.dxe6 Qxe6 16.Kb1 Ba6  
17.Bxa6 Rxa6 18.Qxd6 Rxc6 19.Qxd7 Re8  
20.Qxe6 Rcx6 21.Bf2 Re2 22.Rhe1 f5 23.a4  
bxa3 24.Rxe2 Rxe2 25.Rd8+ ½-½

**(29) Shablinsky,Mikhail (2263) -  
Latash,Albert (2281) [B76]**

ICCF Slav Cup1 Bd3 corr ICCF email, 1999  
1.e4 c5 2.Nf3 d6 3.d4 cxd4 4.Nxd4 Nf6 5.Nc3  
g6 6.Be3 Bg7 7.f3 0-0 8.Qd2 Nc6 9.0-0-0 d5  
10.exd5 Nxd5 11.Nxc6 bxc6 12.Bd4 e5 13.Bc5  
Re8 14.Nxd5 cxd5 15.Qxd5 Qxd5 16.Rxd5 Be6  
17.Rd6 Bxa2 18.b4 Bf8 19.Ra6 ½-½

**(30) Ziemacki,Janusz - Latash,Albert  
(2281) [B22]**

ICCF Slav Cup1 Bd3 corr ICCF email, 1999  
1.e4 c5 2.c3 Nf6 3.e5 Nd5 4.d4 cxd4 5.Nf3 Nc6  
6.Bc4 Nb6 7.Bb3 d6 8.exd6 Qxd6 9.0-0 Be6  
10.Bxe6 Qxe6 11.Nxd4 Nxd4 12.Qxd4 Rd8  
13.Qh4 Qe2 14.Bd2 h5 15.h3 Nc4 16.Re1 Qd3  
17.Bc1 a6 18.b3 Nd6 19.Na3 Qxc3 20.Bg5 f6  
21.Be3 Qa5 22.Nc4 Nxc4 23.Qxc4 Qd5 24.Qc2  
Qd3 25.Qc7 Qd7 26.Qb6 e5 27.Rac1 Bd6  
28.Red1 0-0 29.Rd2 Qe7 30.Rcd1 Bc7  
31.Qxb7 Rxd2 32.Rxd2 a5 33.Bb6 Rf7 34.Qa8+  
Kh7 35.Qxa5 Bxb6 36.Qxb6 Qa3 37.Rc2 Rd7  
38.Qc6 Qe7 39.Qe4+ g6 40.a4 Rd4 time 0-1